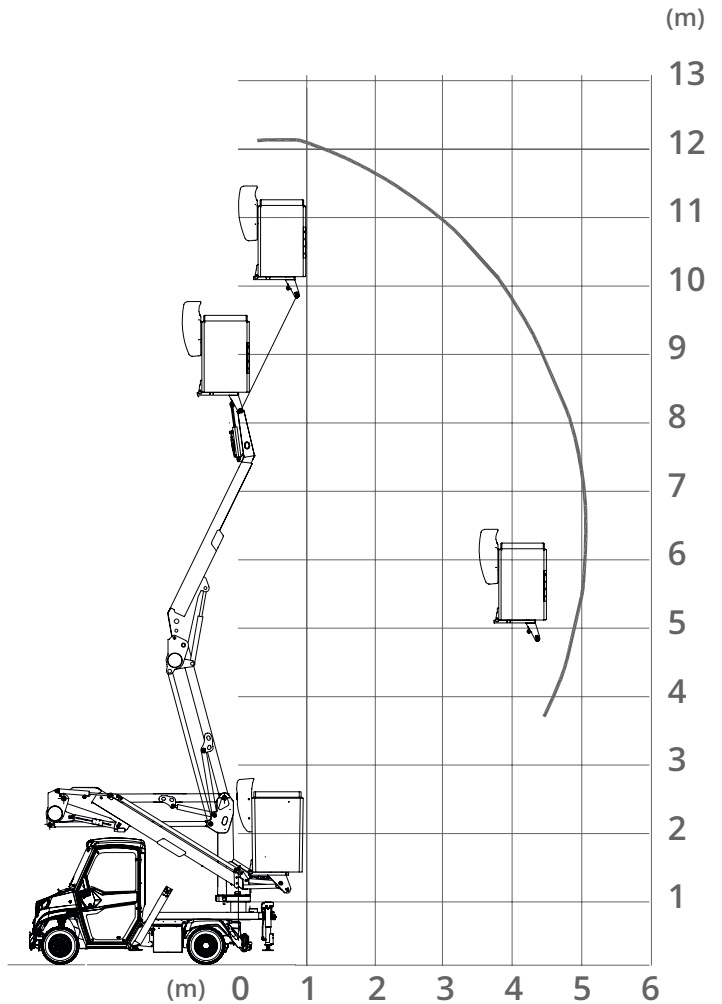
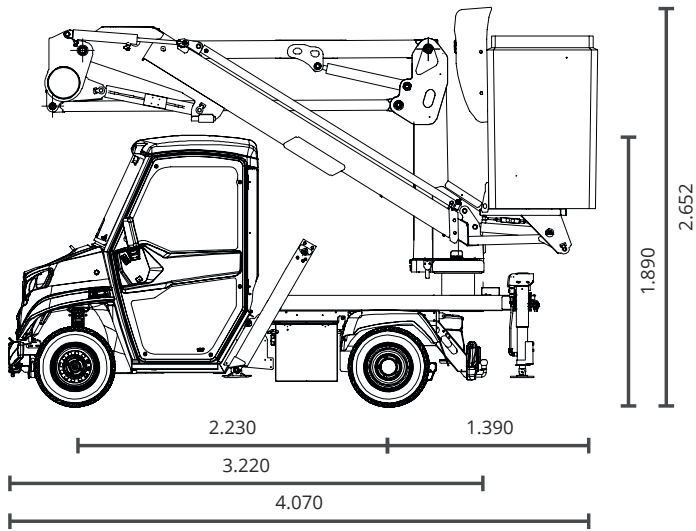


ATX
**MOBILE ELEVATING
WORK PLATFORM**



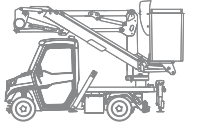
Fully electric equipment for all types of work at height where the protection of the environment and noise pollution is necessary, such as municipal maintenance of public lighting, traffic lights, signaling or indoor work.

It has great features in a very small size.

Mobile elevating work platform

| | | | |
|--|---|--|---|
| compatibles models | ATX340EH (long wheelbase versions) | controls | intuitive and easy to use controls obtaining proportional movements |
| booms | the boom is articulated and telescopic type | emergency controls | located in the fixed turret on the ground, emergency controls are priority over those of the basket |
| maximum working height [m] | 12 | rotation (it has a rotating movement driven by a hydraulic motor-reducer and protected with a brake valve) [°] | 430° |
| height from base platform to basket [m] | 10 | stabilizzatori | quattro piedi stabilizzatori con controllo indipendente per un posizionamento ottimale e veloce |
| maximum lateral working outreach [m] | 5,1 | electric motor pump [W - V] | 2500 W 48 V |
| made of polyester fiber with automatic levelling thanks to 1.000 V hydraulic and insulated cylinders | | set dimensions (length x width x height) [mm] | 4.070 x 1.500 x 2.652 |
| basket: dimensions (length x width x height) [mm] | 750 x 750 x 1.100 | residual load (available for tools and accessories) [kg] | approx. 500 |
| basket: capacity | 120 kg (for a single person and tools) | | |
| basket: access | a system that allows to the basket be lowered to the ground for easy access | | |

• as standard Δ optional ! compatible but not type-approved for road circulation
— not available



NOTE

This module is powered by the battery of the vehicle therefore can affect the autonomy of the vehicle itself.

For all the other data refer to the technical specs of the model on which is fitted the module.

The technical specifications, design and performance of the products listed in this technical sheet are indicative and may undergo modifications without forewarning.



Via Cile, 5
35127 Padua | Italy



+39.049.8702400
+39.049.761208



info@alke.com

WWW

www.alke.com



• as standard Δ optional ! compatible but not type-approved for road circulation
— not available

© 2019 Alkè

Rev. 190128



ISO 9001:2015 - BN17607/17301
ISO 14001:2015 - BN17607/17302
OHSAS 18001:2007 - BN17607/17303

The technical specifications, design and performance levels indicated in this technical data sheet are by way of example only and may be subject to modifications without prior notice.